

POWERS STEEL LINTEL NOTES

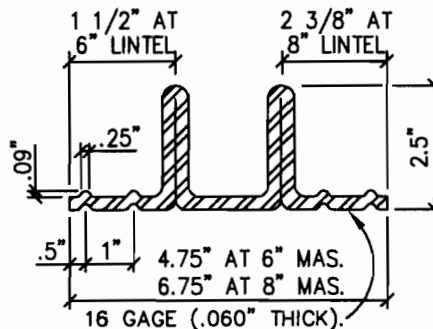
1. PRODUCT NAME POWERS STEEL LINTELS (PATENT NO. 4757656; SBCCI PST & ESI # 93-132)
 PREFORMED POWERS STEEL LINTEL SHALL BE GALVANIZED COIL STEEL AS MANUFACTURED BY POWERS STEEL AND WIRE PRODUCTS, INC. STEEL GRADE SHALL BE ASTM A1011/A1011M-07 $F_y=40$ ksi. MINIMUM. STEEL SHALL BE CLEAN AND FREE OF ANY MATERIAL THAT MIGHT INHIBIT BOND.
2. SHORE LINTELS AS REQUIRED TO COMPENSATE FOR DEAD LOAD DEFLECTION ON NON-CURED MASONRY.
3. LINTELS TO BE USED WITH BRICK OR CONCRETE MASONRY UNITS HAVING A MINIMUM f'_m AS SHOWN.
4. STEEL SURFACES IN CONTACT WITH GROUT AND/OR MORTAR SHALL BE UNPAINTED AND FREE OF MATERIAL THAT MIGHT INHIBIT BOND.
5. BEARING EACH END SHALL BE 4" PLUS OR MINUS 1". BEARING SHALL BE ON A MINIMUM 8" DEEP GROUDED CELL.
6. f'_m : 1500 psi. MASONRY UNITS SHALL CONFORM TO ASTM C90, GRADE N. USE OPEN END MASONRY UNITS AT LINTELS TO ALLOW SOLID GROUTING.
7. GROUT: 2,000 psi SLUMP RANGE: 8" TO 11". GROUT SHALL COMPLY WITH ASTM C476-83 AND BE EITHER COARSE OR FINE GROUT. GROUT SHALL BE CONSOLIDATED BY MECHANICAL VIBRATION DURING PLACING BEFORE LOSS OF PLASTICITY IN A MANNER TO FILL THE GROUT SPACE. GROUT POURS GREATER THAN 12 INCHES SHALL BE RECONSOLIDATED BY MECHANICAL VIBRATION TO MINIMIZE VOIDS DUE TO WATER LOSS. GROUT POURS 12 INCHES OR LESS IN HEIGHT SHALL BE MECHANICALLY VIBRATED, OR PUDDLED.
8. MORTAR: TYPE "S" OR TYPE "M" 1800 psi.
9. TOP REINFORCING, OR TOP OF WALL REINFORCING, IS REQUIRED BY CODES TO PROVIDE A CONTINUOUS TIE AROUND A STRUCTURE AND TO PROVIDE FOR UPLIFT RESISTANCE AT LINTELS. TOP REINFORCING IS NOT REQUIRED AND IS NOT PART OF THE POWERS STEEL LINTELS. (EXCEPT THAT A REINFORCING BAR IS REQUIRED AT THE TOP OF THE STEEL STIRRUPS) SIZING OF THE TOP REINFORCING IS THE RESPONSIBILITY OF THE BUILDING ARCHITECT OR ENGINEER.
10. ATTACHMENTS TO TOP OF WALL PER ARCHITECTURAL AND/OR ENGINEERING DRAWINGS.
11. MASONRY WALL MAY OCCUR ABOVE COMPOSITE LINTEL HEIGHT.
12. #5 REINFORCING BAR (GRADE 60) TO BEAR ON BOTTOM OF STEEL LINTEL AS SHOWN AND TO BE THE SAME LENGTH AS LINTEL. NOTE: #5 ONLY REQUIRED AT LINTELS WHERE SPECIFICALLY NOTED.
13. INSTALLATION: POWERS LINTELS ARE TO BE INSTALLED IN ACCORDANCE WITH STANDARD CONSTRUCTION PRACTICES, SET TO PROPER LINE AND LEVEL, PLUMB AND TRUE, AND IN CORRECT RELATION TO OTHER WORK.

14. STRUCTURAL ENGINEER FOR THESE LINTELS IS:

CARUSO TURLEY SCOTT INC.

130 S. Priest Dr.
 Tempe, Arizona 85281
 Direct Phone No. (480) 774-1776
 Fax (480) 774-1701
 Paul G. Scott P.E.

IF AN INSPECTOR, CONTRACTOR, SUBCONTRACTOR,
 OR PLANS EXAMINER HAS ANY TECHNICAL QUESTIONS
 PLEASE CALL CARUSO, TURLEY SCOTT INC.



EXPIRES 06-30-13

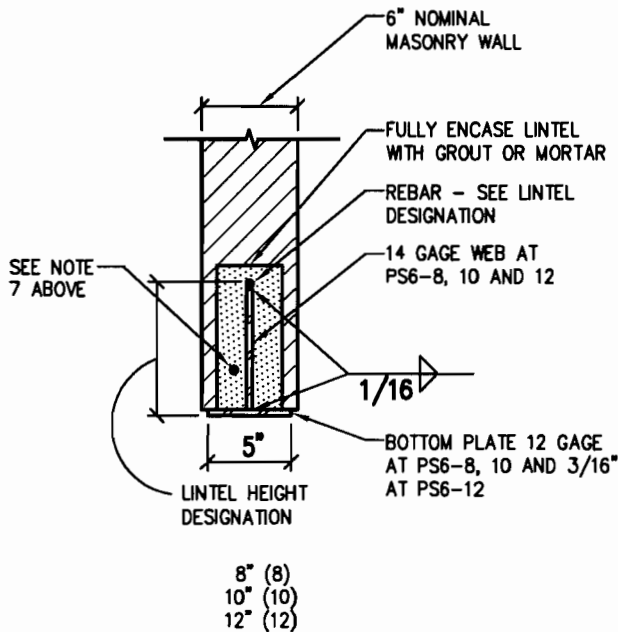
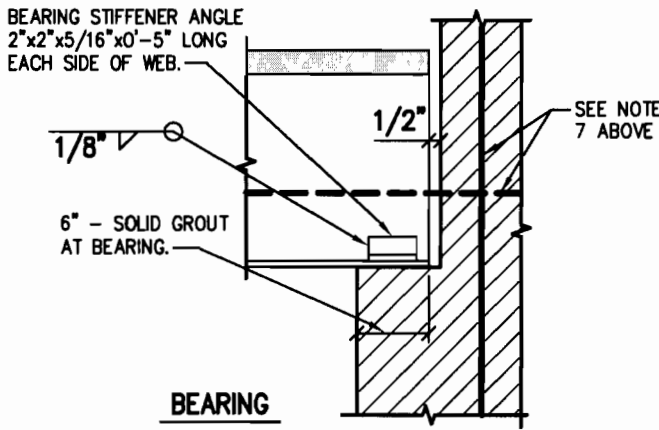
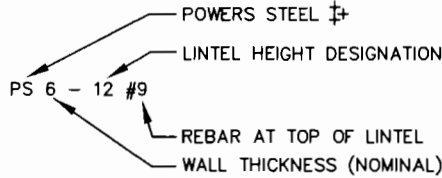
15. LINES SHOWN INDICATE THE #4 REINFORCING BAR CODE REQUIRED MINIMUM REINFORCING AROUND WALL OPENINGS. ENGINEER, ARCHITECT, OR DESIGNER TO VERIFY ACTUAL REINFORCING REQUIRED.
16. SPECIAL INSPECTION IS REQUIRED FOR GROUT PLACEMENT OF THESE LINTELS. IF NO SPECIAL INSPECTION IS PROVIDED THE ALLOWABLE LOADS SHALL BE ONE HALF OF THOSE SHOWN IN THE TABLE.

FILE: PHX MKT '08
 PAGE: PDS1 3-24-08
 2006 IBC/IRC

6PS I-BEAM LINTELS POWERS STEEL PRODUCTS LINTELS †

NOTES:

1. MINIMUM BEARING SHALL BE 6" ON SOLID GROUTED MASONRY.
2. STEEL GRADE IS ASTM A570, GRADE C, $F_y = 36.0$ KSI.
3. NOT TO BE USED WITH GYPSUM UNBURNED CLAY, BURNT ADOBE AND CAVITY WALL MASONRY.
4. FOR SPANS LARGER THAN 5'-0", LINTELS MUST BE SHORED AT MIDSPAN UNTIL MASONRY HAS CURED.
5. REBAR GRADE IS ASTM A615 - GRADE 60.
6. CITY OF PHOENIX STANDARD PLAN LPST 96-0017
7. LINES SHOWN INDICATE THE #4 REINFORCING BAR CODE REQUIRED MINIMUM REINFORCING AROUND WALL OPENINGS. ENGINEER, ARCHITECT, OR DESIGNER TO VERIFY ACTUAL REINFORCING REQUIRED



| LINTEL | PS6-8#7 | PS6-10#8 | PS6-12#9 |
|--------|---------------------|---------------------|---------------------|
| SPAN | ALLOWABLE LOAD #/FT | ALLOWABLE LOAD #/FT | ALLOWABLE LOAD #/FT |
| 3'-4" | 3514 | 3514 | 3514 |
| 4'-0" | 2925 | 2925 | 2925 |
| 4'-8" | 2507 | 2507 | 2507 |
| 5'-4" | 2195 | 2195 | 2195 |
| 6'-0" | 1793 | 1950 | 1950 |
| 6'-8" | 1452 | 1755 | 1755 |
| 7'-4" | 1200 | 1596 | 1596 |
| 8'-0" | 1005 | 1430 | 1463 |
| 8'-8" | 855 | 1218 | 1350 |
| 9'-4" | 740 | 1051 | 1254 |
| 10'-0" | 640 | 915 | 1170 |
| 10'-8" | 565 | 800 | 1097 |
| 11'-4" | 500 | 710 | 1033 |
| 12'-0" | 445 | 635 | 975 |
| 12'-8" | 400 | 570 | 924 |
| 13'-4" | 360 | 515 | 878 |
| 14'-0" | 330 | 465 | 836 |
| 14'-8" | 295 | 425 | 773 |
| 15'-4" | 275 | 390 | 708 |
| 16'-0" | 250 | 355 | 650 |
| 16'-8" | 230 | 330 | 599 |
| 17'-4" | 215 | 305 | 554 |
| 18'-0" | 200 | 280 | 513 |
| 18'-8" | 180 | 260 | 477 |
| 19'-4" | --- | 245 | 445 |
| 20'-0" | --- | 230 | 415 |
| 20'-8" | --- | 215 | 385 |
| 21'-4" | --- | 200 | 360 |
| 22'-0" | --- | 190 | 340 |
| 22'-8" | --- | 175 | 325 |
| 23'-4" | --- | 165 | 305 |
| 24'-0" | --- | 155 | 285 |



CARUSO ■ TURLEY ■ SCOTT ■ INC. CONSULTING STRUCTURAL ENGINEERS

130 SOUTH PRIEST DRIVE

TEMPE, ARIZONA 85281 (480) 774-1776
FAX (480) 774-1701

| | | | |
|---|----------------------|--------------|-------------------------|
| TITLE POWERS STEEL 6PS I-BEAM LINTELS | JOB NUMBER 96-114 | DRAWN TMH | SHEET 1 OF |
| | DATE 3-24-08 | ENGR PGS | |

2006-IBC

8PS I-BEAM LINTELS

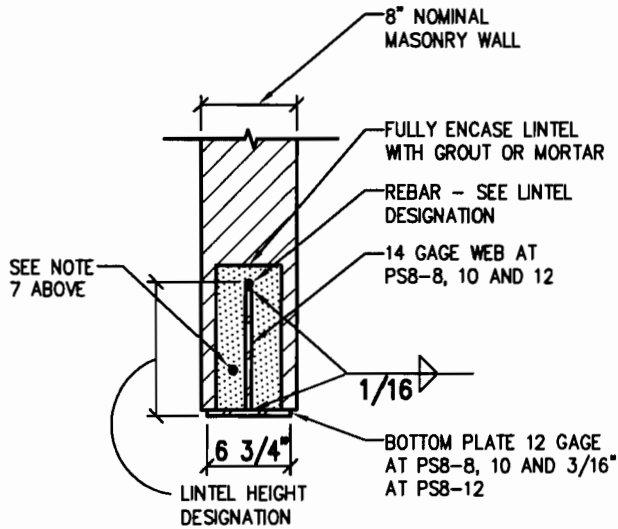
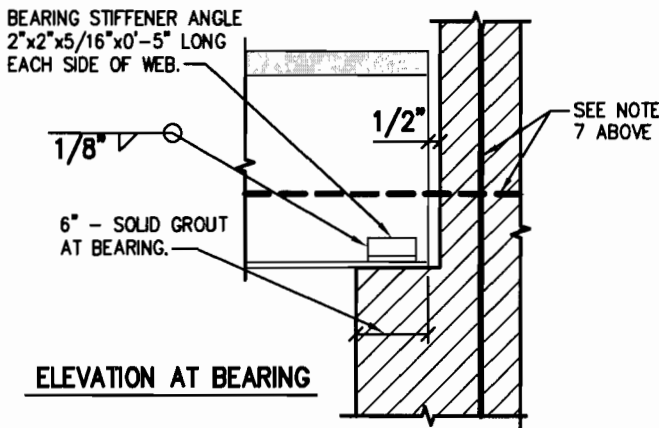
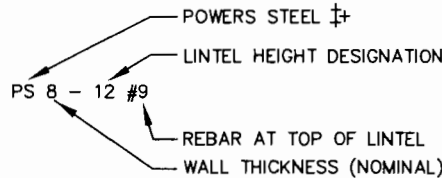
POWERS STEEL PRODUCTS LINTELS †

NOTES:

1. MINIMUM BEARING SHALL BE 6" ON SOLID GROUTED MASONRY.
2. STEEL GRADE IS ASTM A570, GRADE C, F_y = 36.0 KSI.
3. NOT TO BE USED WITH GYPSUM UNBURNED CLAY, BURNT ADOBE AND CAVITY WALL MASONRY.
4. FOR SPANS LARGER THAN 5'-0", LINTELS MUST BE SHORED AT MIDSPAN UNTIL MASONRY HAS CURED.
5. REBAR GRADE IS ASTM A615 - GRADE 60.
6. CITY OF PHOENIX STANDARD PLAN LPST 96-0017
7. LINES SHOWN INDICATE THE #4 REINFORCING BAR CODE REQUIRED MINIMUM REINFORCING AROUND WALL OPENINGS. ENGINEER, ARCHITECT, OR DESIGNER TO VERIFY ACTUAL REINFORCING REQUIRED



EXPIRES 06-30-13



SECTION

| |
|----------|
| 8" (8) |
| 10" (10) |
| 12" (12) |

| LINTEL | PS8-8#7 | PS8-10#8 | PS8-12#9 |
|--------|---------------------|---------------------|---------------------|
| SPAN | ALLOWABLE LOAD #/FT | ALLOWABLE LOAD #/FT | ALLOWABLE LOAD #/FT |
| 3'-4" | 3851 | 3851 | 3851 |
| 4'-0" | 3206 | 3206 | 3206 |
| 4'-8" | 2748 | 2748 | 2748 |
| 5'-4" | 2362 | 2406 | 2406 |
| 6'-0" | 1865 | 2137 | 2137 |
| 6'-8" | 1505 | 1923 | 1923 |
| 7'-4" | 1250 | 1749 | 1749 |
| 8'-0" | 1050 | 1603 | 1603 |
| 8'-8" | 890 | 1449 | 1480 |
| 9'-4" | 770 | 1250 | 1374 |
| 10'-0" | 670 | 1090 | 1282 |
| 10'-8" | 590 | 955 | 1202 |
| 11'-4" | 520 | 845 | 1132 |
| 12'-0" | 465 | 755 | 1069 |
| 12'-8" | 415 | 675 | 1012 |
| 13'-4" | 380 | 610 | 962 |
| 14'-0" | 340 | 555 | 875 |
| 14'-8" | 315 | 505 | 800 |
| 15'-4" | 285 | 460 | 730 |
| 16'-0" | 265 | 425 | 670 |
| 16'-8" | 240 | 390 | 620 |
| 17'-4" | 220 | 360 | 570 |
| 18'-0" | 200 | 335 | 530 |
| 18'-8" | 190 | 310 | 490 |
| 19'-4" | 175 | 290 | 460 |
| 20'-0" | 165 | 270 | 430 |
| 20'-8" | --- | 255 | 400 |
| 21'-4" | --- | 240 | 375 |
| 22'-0" | --- | 225 | 355 |
| 22'-8" | --- | 210 | 335 |
| 23'-4" | --- | 200 | 315 |
| 24'-0" | --- | 190 | 300 |



CARUSO ■ TURLEY ■ SCOTT ■ INC. CONSULTING STRUCTURAL ENGINEERS

130 SOUTH PRIEST DRIVE

TEMPE, ARIZONA 85281

(480) 774-1776

FAX

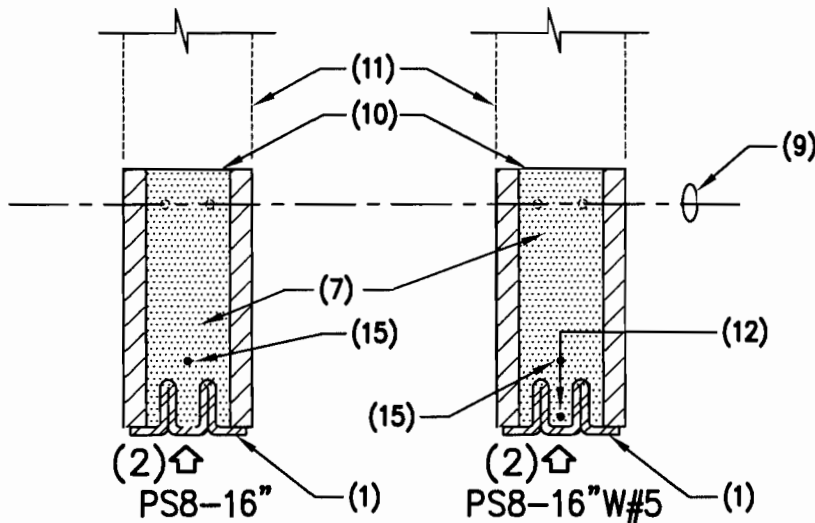
(480) 774-1701

| | | | |
|---|----------------------|--------------|---|
| TITLE POWERS STEEL 8PS I-BEAM LINTELS | JOB NUMBER 96-114 | DRAWN TMH | SHEET 2 OF |
| | DATE 3-24-08 | ENGR PGS | |

2006-IBC



EXPIRES 06-30-13



LINTEL EXAMPLE SECTIONS

NOTE: LINTEL HEIGHTS VARY - SEE PLANS AND SCHEDULES.

NOTE:

↑ INDICATES SHORING OF LINTEL AND MASONRY FOR DEAD LOAD DEFLECTION OF NON-CURED MASONRY.

POWERS STEEL PRODUCTS LINTELS

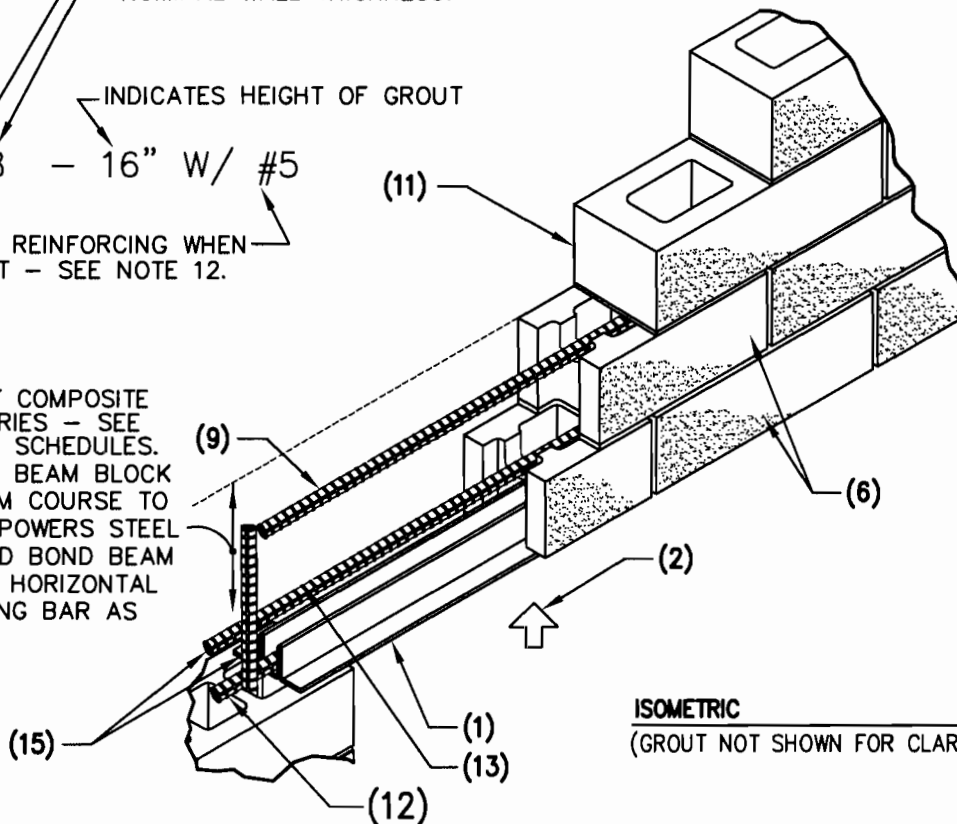
POWERS STEEL (LINTEL DESIGNATION)
NOMINAL WALL THICKNESS.

INDICATES HEIGHT OF GROUT

PS8 - 16" W/ #5

#5 BOTTOM REINFORCING WHEN CALLED OUT - SEE NOTE 12.

HEIGHT OF COMPOSITE LINTEL VARIES - SEE PLAN AND SCHEDULES. USE BOND BEAM BLOCK AT BOTTOM COURSE TO GO OVER POWERS STEEL LINTEL AND BOND BEAM BLOCK AT HORIZONTAL REINFORCING BAR AS OCCURS.

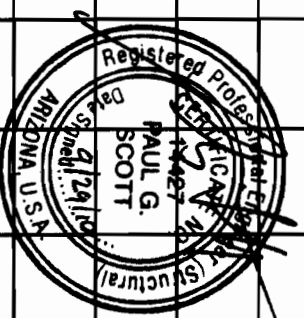


ISOMETRIC
(GROUT NOT SHOWN FOR CLARITY)

POWERS STEEL LINTELS DETAILS

LINTEL LOAD TABLE (IN POUNDS PER LINEAL FOOT)
DEAD LOAD PLUS LIVE LOAD

| SPAN | PS6-8" | PS6-12" | PS6-12" W/#5 | PS6-16" | PS6-16" W/#5 | PS6-20" | PS6-20" W/#5 | PS6-24" | PS6-24" W/#5 | PS6-32" | PS6-32" W/#5 | PS6-40" | PS6-40" W/#5 | PS6-48" | PS6-48" W/#5 | SPAN |
|--------|--------|---------|-----------------|---------|-----------------|---------|-----------------|---------|-----------------|---------|-----------------|---------|-----------------|---------|-----------------|--------|
| 2'-0" | 1242 | 1990 | 1948 | 2756 | 2699 | 3534 | 3463 | 4320 | 4237 | 5910 | 5604 | 7518 | 7392 | 9139 | 8993 | 2'-0" |
| 2'-8" | 930 | 1491 | 1459 | 2064 | 2022 | 2647 | 2594 | 3236 | 3173 | 4427 | 4348 | 5631 | 5537 | 6845 | 6736 | 2'-8" |
| 3'-4" | 746 | 1195 | 1170 | 1655 | 1621 | 2122 | 2080 | 2594 | 2544 | 3550 | 3486 | 4515 | 4439 | 5489 | 5401 | 3'-4" |
| 4'-0" | 621 | 995 | 974 | 1378 | 1350 | 1767 | 1732 | 2160 | 2118 | 2955 | 2902 | 3759 | 3696 | 4569 | 4497 | 4'-0" |
| 4'-8" | 532 | 852 | 834 | 1180 | 1156 | 1513 | 1483 | 1850 | 1814 | 2531 | 2486 | 3220 | 3166 | 3914 | 3851 | 4'-8" |
| 5'-4" | 466 | 747 | 731 | 1034 | 1013 | 1326 | 1299 | 1621 | 1590 | 2218 | 2178 | 2821 | 2774 | 3429 | 3374 | 5'-4" |
| 6'-0" | 414 | 663 | 649 | 919 | 900 | 1178 | 1154 | 1440 | 1412 | 1970 | 1935 | 2506 | 2464 | 3046 | 2998 | 6'-0" |
| 6'-8" | 372 | 597 | 584 | 826 | 809 | 1060 | 1038 | 1295 | 1270 | 1772 | 1740 | 2254 | 2216 | 2740 | 2697 | 6'-8" |
| 7'-4" | 339 | 543 | 531 | 752 | 736 | 964 | 945 | 1179 | 1156 | 1613 | 1584 | 2051 | 2017 | 2493 | 2454 | 7'-4" |
| 8'-0" | 310 | 498 | 487 | 689 | 675 | 883 | 866 | 1080 | 1059 | 1478 | 1451 | 1880 | 1848 | 2285 | 2248 | 8'-0" |
| 8'-8" | 286 | 459 | 449 | 636 | 623 | 815 | 799 | 996 | 977 | 1363 | 1339 | 1734 | 1705 | 2108 | 2075 | 8'-8" |
| 9'-4" | 266 | 427 | 417 | 591 | 579 | 757 | 742 | 926 | 908 | 1267 | 1244 | 1612 | 1584 | 1959 | 1928 | 9'-4" |
| 10'-0" | 245 | 398 | 390 | 551 | 540 | 707 | 693 | 864 | 847 | 1182 | 1161 | 1504 | 1478 | 1828 | 1799 | 10'-0" |
| 10'-8" | 215 | 373 | 365 | 517 | 506 | 662 | 649 | 810 | 794 | 1108 | 1088 | 1409 | 1385 | 1713 | 1686 | 10'-8" |
| 11'-4" | | 351 | 344 | 486 | 476 | 624 | 611 | 762 | 748 | 1043 | 1025 | 1327 | 1305 | 1613 | 1587 | 11'-4" |
| 12'-0" | | 332 | 325 | 459 | 450 | 589 | 577 | 720 | 706 | 985 | 967 | 1253 | 1232 | 1523 | 1499 | 12'-0" |
| 12'-8" | | 314 | 307 | 435 | 426 | 558 | 547 | 682 | 669 | 933 | 916 | 1187 | 1167 | 1443 | 1420 | 12'-8" |
| 13'-4" | | 299 | 292 | 414 | 405 | 530 | 520 | 648 | 636 | 887 | 871 | 1128 | 1109 | 1371 | 1349 | 13'-4" |
| 14'-0" | | 275 | 278 | 394 | 386 | 505 | 495 | 617 | 605 | 744 | 729 | 1074 | 1056 | 1306 | 1285 | 14'-0" |
| 14'-8" | | 250 | 266 | 376 | 368 | 482 | 472 | 589 | 578 | 744 | 731 | 1025 | 1025 | 1246 | 1226 | 14'-8" |
| 15'-4" | | 229 | 245 | 360 | 352 | 461 | 452 | 564 | 553 | 711 | 757 | 981 | 964 | 1192 | 1173 | 15'-4" |
| 16'-0" | | 210 | 225 | 345 | 337 | 442 | 433 | 540 | 530 | 739 | 726 | 940 | 924 | 1142 | 1124 | 16'-0" |
| 16'-8" | | | 207 | 330 | 324 | 408 | 400 | 518 | 508 | 709 | 696 | 902 | 887 | 1096 | 1079 | 16'-8" |
| 17'-4" | | | | 305 | 311 | 366 | 358 | 498 | 489 | 682 | 670 | 868 | 853 | 1055 | 1038 | 17'-4" |
| 18'-0" | | | | 283 | 284 | 333 | 325 | 480 | 471 | 657 | 645 | 835 | 821 | 1015 | 999 | 18'-0" |
| 18'-8" | | | | 263 | 265 | 300 | 290 | 463 | 454 | 633 | 622 | 805 | 792 | 979 | 963 | 18'-8" |
| 19'-4" | | | | 246 | 247 | 284 | 274 | 447 | 438 | 611 | 601 | 778 | 765 | 946 | 930 | 19'-4" |
| 20'-0" | | | | 229 | 229 | 263 | 252 | 432 | 424 | 591 | 580 | 752 | 739 | 914 | 899 | 20'-0" |
| 20'-8" | | | | 215 | 218 | 252 | 242 | 418 | 410 | 572 | 564 | 727 | 715 | 884 | 873 | 20'-8" |
| 21'-4" | | | | 202 | 205 | 238 | 232 | 405 | 397 | 554 | 544 | 705 | 693 | 857 | 843 | 21'-4" |
| 22'-0" | | | | | | | | 392 | 385 | 537 | 528 | 683 | 672 | 831 | 818 | 22'-0" |
| 22'-8" | | | | | | | | 369 | 374 | 521 | 512 | 663 | 652 | 806 | 793 | 22'-8" |
| 23'-4" | | | | | | | | 348 | 363 | 507 | 498 | 644 | 634 | 783 | 771 | 23'-4" |
| 24'-0" | | | | | | | | 329 | 353 | 493 | 484 | 627 | 616 | 762 | 749 | 24'-0" |
| 24'-8" | | | | | | | | 312 | 340 | 479 | 471 | 609 | 599 | 741 | 729 | 24'-8" |
| 25'-4" | | | | | | | | 296 | 322 | 467 | 458 | 594 | 584 | 722 | 710 | 25'-4" |
| 26'-0" | | | | | | | | 280 | 306 | 455 | 446 | 578 | 569 | 703 | 692 | 26'-0" |
| 26'-8" | | | | | | | | 267 | 291 | 440 | 435 | 564 | 554 | 685 | 674 | 26'-8" |
| 27'-4" | | | | | | | | 254 | 277 | 419 | 425 | 550 | 541 | 669 | 658 | 27'-4" |
| 28'-0" | | | | | | | | 242 | 264 | 399 | 415 | 537 | 528 | 653 | 642 | 28'-0" |
| 28'-8" | | | | | | | | 231 | 252 | 380 | 405 | 524 | 516 | 637 | 627 | 28'-8" |
| 29'-4" | | | | | | | | 220 | 240 | 364 | 396 | 513 | 504 | 623 | 613 | 29'-4" |
| 30'-0" | | | | | | | | 211 | 230 | 347 | 382 | 501 | 493 | 609 | 600 | 30'-0" |



EXPIRES 06-30-13

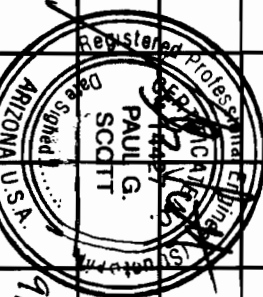
POWERS STEEL PRODUCTS LINTELS† PS8 LINTELS

FILE: 2006-IBC-IRC
PAGE: PSS 3-24-08

LINTEL LOAD TABLE (IN POUNDS PER LINEAL FOOT) DEAD LOAD PLUS LIVE LOAD

SPECIAL INSPECTION IS REQUIRED FOR GROUT PLACEMENT OF THESE LINTELS. IF NO SPECIAL INSPECTION IS PROVIDED THE ALLOWABLE LOADS SHALL BE ONE HALF OF THOSE SHOWN IN THE TABLE.

| SPAN | PS8-8" | PS8-12" | PS8-12" W/#5 | PS8-16" | PS8-16" W/#5 | PS8-20" | PS8-20" W/#5 | PS8-24" | PS8-24" W/#5 | PS8-32" | PS8-32" W/#5 | PS8-40" | PS8-40" W/#5 | PS8-48" | PS8-48" W/#5 | SPAN |
|--------|--------|---------|-----------------|---------|-----------------|---------|-----------------|---------|-----------------|---------|-----------------|---------|-----------------|---------|-----------------|--------|
| 2'-0" | 1705 | 2730 | 2679 | 3779 | 3711 | 4843 | 4760 | 5918 | 5820 | 8090 | 7967 | 10284 | 10138 | 12494 | 12327 | 2'-0" |
| 2'-8" | 1277 | 2045 | 2007 | 2831 | 2780 | 3628 | 3565 | 4433 | 4360 | 6060 | 5967 | 7703 | 7594 | 9359 | 9233 | 2'-8" |
| 3'-4" | 1024 | 1640 | 1609 | 2270 | 2229 | 2909 | 2859 | 3554 | 3495 | 4859 | 4785 | 6177 | 6089 | 7504 | 7403 | 3'-4" |
| 4'-0" | 852 | 1365 | 1340 | 1890 | 1856 | 2422 | 2380 | 2959 | 2910 | 4045 | 3983 | 5142 | 5069 | 6247 | 6163 | 4'-0" |
| 4'-8" | 730 | 1169 | 1147 | 1618 | 1589 | 2074 | 2038 | 2534 | 2493 | 3464 | 3412 | 4404 | 4342 | 5351 | 5279 | 4'-8" |
| 5'-4" | 640 | 1024 | 1005 | 1418 | 1392 | 1817 | 1786 | 2220 | 2184 | 3035 | 2989 | 3859 | 3804 | 4688 | 4625 | 5'-4" |
| 6'-0" | 588 | 910 | 893 | 1260 | 1237 | 1614 | 1587 | 1973 | 1940 | 2697 | 2656 | 3428 | 3379 | 4165 | 4109 | 6'-0" |
| 6'-8" | 511 | 819 | 803 | 1133 | 1113 | 1452 | 1427 | 1774 | 1745 | 2426 | 2389 | 3084 | 3040 | 3746 | 3696 | 6'-8" |
| 7'-4" | 465 | 745 | 731 | 1031 | 1013 | 1321 | 1299 | 1615 | 1588 | 2207 | 2174 | 2806 | 2766 | 3409 | 3363 | 7'-4" |
| 8'-0" | 426 | 683 | 670 | 945 | 928 | 1211 | 1190 | 1479 | 1455 | 2022 | 1992 | 2571 | 2534 | 3124 | 3082 | 8'-0" |
| 8'-8" | 393 | 630 | 618 | 872 | 856 | 1117 | 1098 | 1365 | 1343 | 1866 | 1838 | 2372 | 2339 | 2882 | 2843 | 8'-8" |
| 9'-4" | 365 | 585 | 574 | 810 | 795 | 1038 | 1020 | 1268 | 1248 | 1734 | 1708 | 2205 | 2173 | 2678 | 2642 | 9'-4" |
| 10'-0" | 321 | 546 | 536 | 756 | 742 | 969 | 952 | 1184 | 1164 | 1618 | 1593 | 2057 | 2028 | 2499 | 2465 | 10'-0" |
| 10'-8" | 282 | 512 | 502 | 708 | 696 | 908 | 892 | 1109 | 1091 | 1516 | 1493 | 1928 | 1900 | 2342 | 2310 | 10'-8" |
| 11'-4" | 250 | 482 | 473 | 667 | 655 | 855 | 840 | 1045 | 1027 | 1428 | 1406 | 1815 | 1789 | 2205 | 2176 | 11'-4" |
| 12'-0" | 223 | 455 | 447 | 630 | 619 | 807 | 793 | 986 | 970 | 1348 | 1328 | 1714 | 1690 | 2082 | 2054 | 12'-0" |
| 12'-8" | 200 | 431 | 423 | 597 | 586 | 764 | 751 | 934 | 919 | 1277 | 1258 | 1623 | 1600 | 1972 | 1946 | 12'-8" |
| 13'-4" | | 393 | 402 | 567 | 557 | 727 | 714 | 888 | 873 | 1214 | 1195 | 1543 | 1521 | 1875 | 1849 | 13'-4" |
| 14'-0" | | 357 | 381 | 540 | 530 | 692 | 680 | 845 | 831 | 1156 | 1138 | 1469 | 1448 | 1785 | 1761 | 14'-0" |
| 14'-8" | | 325 | 347 | 515 | 506 | 660 | 649 | 807 | 793 | 1103 | 1086 | 1402 | 1382 | 1703 | 1681 | 14'-8" |
| 15'-4" | | 297 | 317 | 493 | 484 | 632 | 621 | 772 | 759 | 1055 | 1039 | 1342 | 1323 | 1630 | 1608 | 15'-4" |
| 16'-0" | | 273 | 291 | 463 | 464 | 605 | 595 | 740 | 728 | 1011 | 996 | 1286 | 1267 | 1562 | 1541 | 16'-0" |
| 16'-8" | | 252 | 268 | 427 | 445 | 581 | 571 | 710 | 698 | 971 | 956 | 1234 | 1216 | 1499 | 1479 | 16'-8" |
| 17'-4" | | 233 | 248 | 395 | 425 | 559 | 549 | 683 | 672 | 934 | 919 | 1187 | 1170 | 1442 | 1423 | 17'-4" |
| 18'-0" | | 216 | 230 | 366 | 394 | 538 | 529 | 656 | 647 | 899 | 885 | 1143 | 1126 | 1398 | 1370 | 18'-0" |
| 18'-8" | | 201 | 214 | 340 | 366 | 507 | 510 | 634 | 623 | 867 | 853 | 1102 | 1086 | 1338 | 1320 | 18'-8" |
| 19'-4" | | | 200 | 317 | 341 | 473 | 492 | 612 | 602 | 837 | 824 | 1064 | 1049 | 1293 | 1275 | 19'-4" |
| 20'-0" | | | | 297 | 319 | 442 | 476 | 592 | 582 | 809 | 797 | 1028 | 1014 | 1249 | 1233 | 20'-0" |
| 20'-8" | | | | 278 | 298 | 414 | 447 | 570 | 563 | 783 | 771 | 995 | 981 | 1209 | 1193 | 20'-8" |
| 21'-4" | | | | 261 | 280 | 389 | 420 | 536 | 546 | 759 | 747 | 964 | 951 | 1171 | 1156 | 21'-4" |
| 22'-0" | | | | | 245 | 365 | 395 | 503 | 529 | 735 | 724 | 935 | 922 | 1136 | 1121 | 22'-0" |
| 22'-8" | | | | | 231 | 344 | 372 | 474 | 513 | 714 | 703 | 907 | 894 | 1102 | 1087 | 22'-8" |
| 23'-4" | | | | | 218 | 325 | 351 | 448 | 486 | 693 | 683 | 882 | 869 | 1071 | 1057 | 23'-4" |
| 24'-0" | | | | 206 | 221 | 307 | 332 | 423 | 459 | 622 | 613 | 791 | 780 | 961 | 948 | 24'-0" |
| 24'-8" | | | | | 210 | 291 | 314 | 400 | 435 | 566 | 556 | 771 | 760 | 924 | 913 | 24'-8" |
| 25'-4" | | | | | | 276 | 298 | 380 | 412 | 639 | 629 | 812 | 800 | 986 | 973 | 25'-4" |
| 26'-0" | | | | | | 262 | 283 | 360 | 391 | 622 | 613 | 791 | 780 | 961 | 948 | 26'-0" |
| 26'-8" | | | | | | 237 | 256 | 343 | 354 | 536 | 536 | 739 | 742 | 897 | 892 | 26'-8" |
| 27'-4" | | | | | | 226 | 244 | 326 | 337 | 511 | 508 | 704 | 724 | 855 | 855 | 27'-4" |
| 28'-0" | | | | | | 215 | 233 | 311 | 322 | 487 | 487 | 671 | 707 | 815 | 850 | 28'-0" |
| 28'-8" | | | | | | 206 | 222 | 283 | 307 | 465 | 465 | 641 | 691 | 779 | 841 | 28'-8" |
| 29'-4" | | | | | | | 212 | 271 | 294 | 445 | 486 | 613 | 676 | 745 | 822 | 29'-4" |
| 30'-0" | | | | | | | | | | | | | | | | 30'-0" |



EXPIRES 06-30-13